

## Applications

Make	Model	Year	Type
Renault	Megane Scenic	1999-2000	16V GT/Gordini Trekka 4x4 16V 16V E85 16V LPG Bi-Fuel E85 LPG E85 XMOD 16V Renaultsport Gordini 133 16V Hi-Flex Turbo Renaultsport 197 Renaultsport 200 205 Turbo GT Turbo Renaultsport 225 Renaultsport 230 R26 Turbo 165 GT 220 GT TCe 180/190 Renaultsport 250 Renaultsport 265 Renaultsport 275 Trophy Trophy-R TCe 180 RX4 16V Gordini 200
	Modus	2004-2011	
	Symbol	2008-2013	
	Clio / II / III	1999-2013	
	Fluence	2009-2016	
	Kangoo	2001-2009	
	Kangoo II	2008-2013	
	Kangoo II	2013-2015	
	Laguna / II / III	1998-2010	
	Megane / II / III	1999-2015	
	Scenic / II / III	1999-2015	
	Thalia	2001-2013	
	Twingo II	2008-2014	
	Wind	2010-2014	
	Avantime	2000-2003	
	Clio II	1999-2013	
Nissan	Primastar	2002-2011	
	Kubistar	2003-2009	
Opel/Vauxhall	Vivaro-A	2001-2011	
Dacia	Logan / MCV	2005-2015	
	Duster	2010-2015	
	Sandero	2008-2013	

Engine Code	
1.4	K4J, K4J 700, K4J 710, K4J 712, K4J 713, K4J 715, K4J 780, K4J 714, K4J 750 K4J 730, K4J 732, K4J 740, K4J 770, K4J 711
1.6	K4M 708, K4M 732, K4M 734, K4M 740, K4M 742, K4M 743, K4M 744, K4M 745 K4M 746, K4M 748, K4M 800, K4M 801, K4M 804, K4M 862, K4M 736, K4M 838 K4M 839, K4M 864, K4M 730, K4M 753, K4M 752, K4M 754, K4M 752, K4M 766 K4M 782, K4M 642, K4M 697, K4M 753, K4M 750, K4M 830, K4M 831, K4M 834 K4M 835, K4M 836, K4M 724, K4M 720, K4M 711, K4M 710, K4M 714, K4M 716 K4M 718, K4M 824, K4M 690, K4M 700, K4M 701, K4M 704, K4M 706, K4M 709 K4M 712, K4M 761, K4M 760, K4M 762, K4M 768, K4M 813, K4M 812, K4M 856 K4M 764, K4M 788, K4M 846, K4M 848, K4M 858, K4M 866, F4R 790, F4R 791 F4R 792, F4R 795, F4R 794, F4R 797, F4R 796, F4R 897, F4R 896, F4R 780 F4R 712, F4R 713, F4R 714, F4R 715, F4R 784, F4R 764, F4R 765, F4R 786 F4R 787, F4R 886, F4R 887, F4R 800, F4R 802, F4R 820, F4R 810, F4R 811 F4R 813, F4R 740, F4R 741, F4R 746, F4R 770, F4R 771, F4R 774, F4R 776 F4R 874, F4R 872, F4R 870, F4R 740, F4R 741, K4M 744, K4M 745, K4M 854 K4M 606, K4M 646, K4M 696, K4M 842, K4M 896, K4M 616, K4M 790, K4M 791 K4M 792, K4M 794, K4M 802, K4M 776, K4M 760, K4M 761
1.8	F4P 760, F4P 720, F4P 722, F4P 771, F4P 770, F4P 772, F4P 773, F4P 774, F4P 775
2.0	F4R 722, F4R 720, F4R 760, F4R 761, F4R 730, F4R 732, F4R 744, F4R 746, F4R 747 F4R 720, F4R 722, F4R 820, F4R 762, F4R 763, F4R 766, F4R 767, F4R 867, F4R 736, F4R 738, F4R 830, F4R 832, F4R 701, F4R 700

ART NO. 829058

**sonic**  
equipment

Our products are designed to be used correctly and with care for the purpose for which they are intended. No liability is accepted by Sonic for incorrect use of any of our products, and Sonic cannot be held responsible for any damage to personnel, property or equipment when using the tools. Incorrect use will also invalidate the warranty.

If applicable, the applications database and any instructional information provided has been designed to offer general guidance for a particular tool's use and while all attention is given to the accuracy of the data no project should be attempted without referring first to the manufacturer's technical documentation (workshop or instruction manual) or the use of a recognised authority such as Autodata.

It is our policy to continually improve our products and thus we reserve the right to alter specifications and components without prior notice. It is the responsibility of the user to ensure the suitability of the tools and information prior to their use.

## Instructions

### Engine Timing kit Renault Petrol (Belt Drive) - 1.4, 1.6, 1.8, 2.0 16V



WWW.SONIC-EQUIPMENT.COM

WWW.SONIC-EQUIPMENT.COM

WWW.SONIC-EQUIPMENT.COM

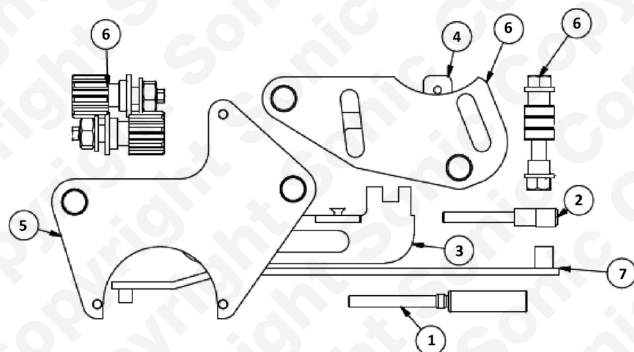
## 829058 - Engine Timing kit

### Description:

The 829058 has been specifically put together to allow the user to lock the engine components of the 1.4, 1.6, 1.8 and 2.0 16V Turbo and non-turbo petrol engines.

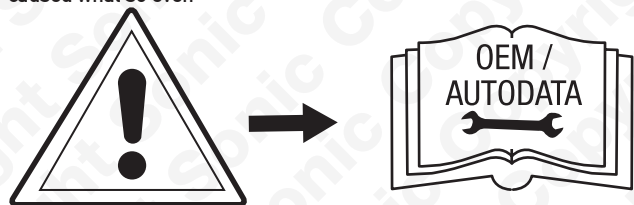
## Components

Ref	Comp	OEM	Description
1	4880048	MOT 1489	Crankshaft Locking Pin
2	4880095	MOT 1054	Crankshaft Locking Pin
3	4880109	MOT 1496	Camshaft Setting Bar - Renault
4	4880111	MOT 1750	Mounting Bracket for 3
5	4880115	MOT 1490	Camshaft Pulley Alignment Tool - Renault
6	4880117	MOT 1801	Camshaft Sprocket Locking Tool - Renault 2.0 (Eng. F4R)
7	4880323	MOT 1368	Cam-belt Tensioning Tool (3894)

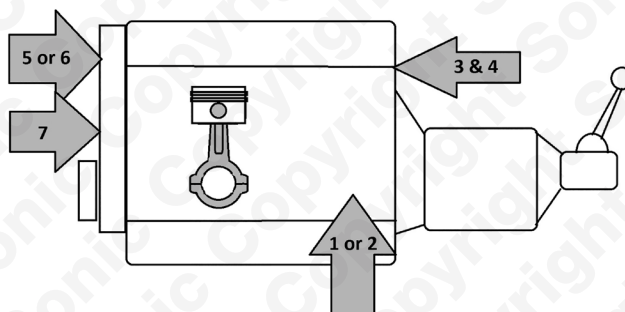


## Instructions

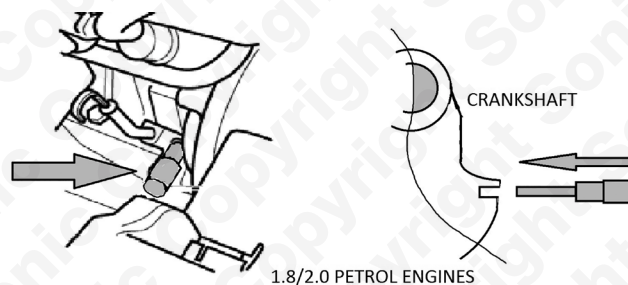
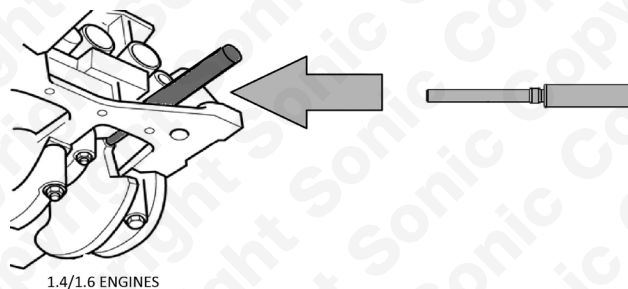
The following instructions are for guidance only. Please refer to OEM derived data such as the vehicles manufactures own data or Autodata. The use of these engine timing tools is purely down to the user's discretion and Sonic cannot be held responsible for any damage caused what so ever.



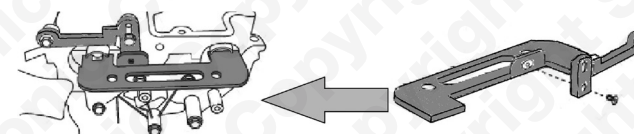
## Instructions



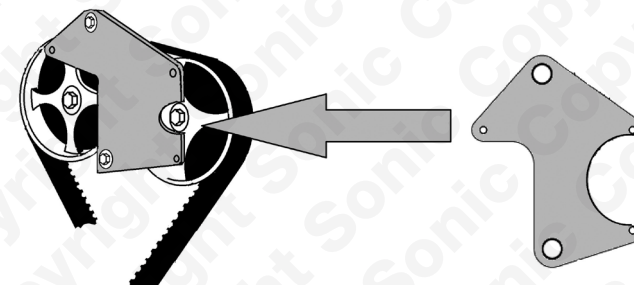
Components 1 & 2 - Crankshaft Locking Pins  
Component 1 - 1.4 & 1.6 engines  
Component 2 - 1.8 and 2.0 engines



Component 3 & 4 - Camshaft Setting Bar - Renault  
Used to lock the camshafts independently of the camshaft pulleys.



Component 5 & 6 - Camshaft Pulley Alignment Tool - Renault  
5 - Use to lock the camshaft pulleys (except F4Rb engines).  
6 - used to lock the camshaft pulleys (F4R engines only)



Component 7 = Cam-belt Tensioning Tool  
5 - Use to adjust the belt tensioner.