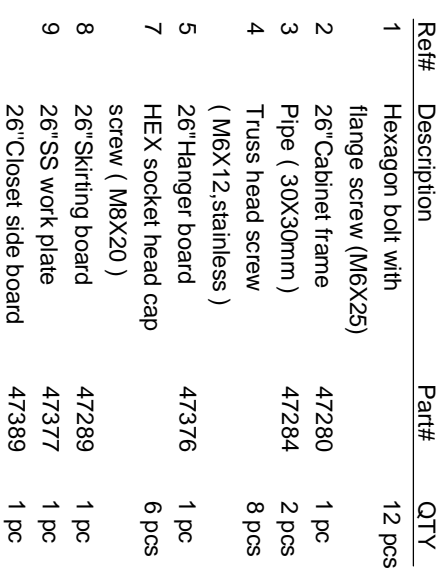
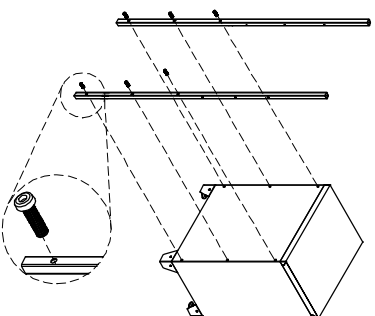


PART LIST



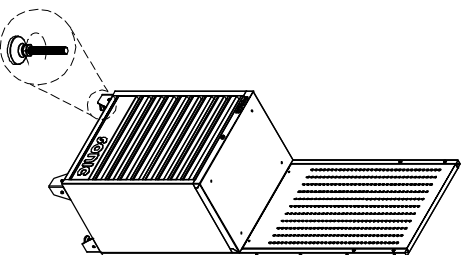
1. INSTALL PIPES

Simply position the pipes over the holes on the cabinets and attach with the bolts provided. Tighten HEX socket head cap screws(M8X20) securely.



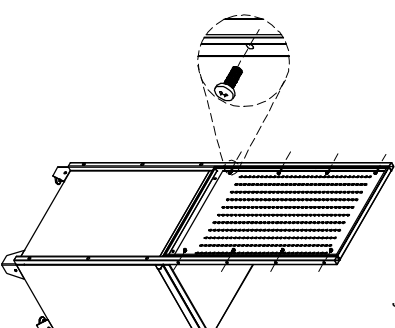
3. ADJUST LEVELER

Adjust the levelers and make the whole unit to stable state.



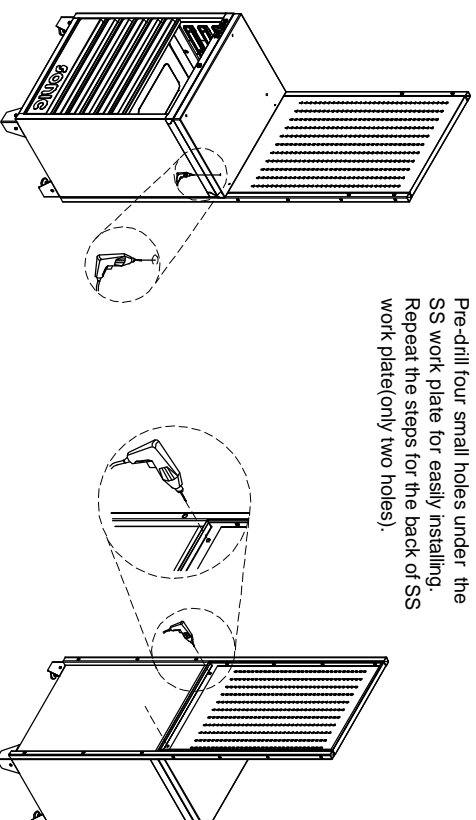
2. INSTALL HANGER BOARD

Simply position the hanger board over the holes and attach with the bolts provided. Tighten truss head screws(M6X12, stainless) securely.



4. PRE-DRILL HOLES OF SS WORK PLATE

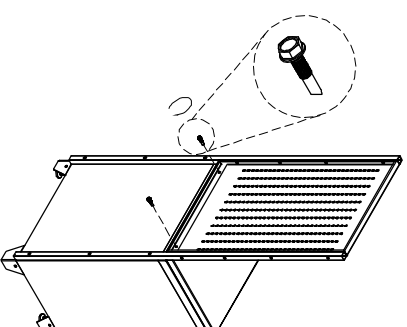
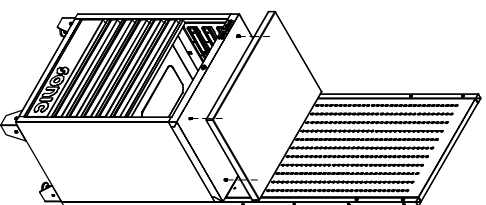
Pre-drill four small holes under the SS work plate for easily installing. Repeat the steps for the back of SS work plate(only two holes).



ASSEMBLY INSTRUCTIONS

5. INSTALL SS WORK PLATE

Position the SS work plate on the top of cabinets. Remove the top drawer of cabinet. Insert the Hexagon bolt with flange screw (M6X25) through the top of cabinet, and into the bottom of the SS worktop. Tighten securely. Reinstall the drawers.



Insert the Hexagon bolt with flange screw (M6X25) through the back of hauger boards, and into the side of SS work plate. Tighten securely.

6. INSTALL SKIRTING BOARDS

Position the skirting boards on the legs of cabinets. Insert the truss head screw (M6X12, stainless) through the legs. Tighten securely. Repeat the steps for other skirting boards.

