

Applications

Make	Model	Year	
BMW	1 Series	1.6, 2.0, 3.0	2007-2016
	2 Series Coupe		
	3 Series		
	3 Series Gran Turismo		
	4 Series Cabriolet		
	4 Series Coupe		
	4 Series Gran Coupe		
	5, 6, 7 Series		
	5 Series Gran Turismo		
	6 Series Gran Coupe		
Mini	X1, X3, X4, X5, X6		
	Clubman, Clubvan		
	COUNTRYMAN, Coupe		
	Mini, Paceman, Roadster		

Engine Code	
1.6, 2.0, 3.0	N47 D20A/K0, N47 D20A, N47 D16C, N47 D16, N47S D20B/D/T0, N47 D20C/K1, N47 D20C, N47 D20C/U1, N47 D20D/T1, N47 D20D, N47 D20C/D1, N47 D20A/U0, N47 D20K1, N47 D20U0, N47T D2001, N47D20C/O, N47 D20U1, N47, N47 D20C/O1, N47 D2000, N47S D20D/T0, N47 D20A/O0, N47 C16U1, N47 C16K1, N47 C20K1, N47 C20U1, N47 C16A/U1, N47 C20A/K1, N57 D30A/O0, D57 D30A/D1, N57 D30U0, N57 D30B, N57 D30A, N57 D30U0, N57 D30B, N57 D30A, N57 D30U0, N57 D3000, N57 D3001, N57 D30B/T1, N57 D30T0, N57 D30C/S1, N57 D30A0, N57 D30T0, N57 D30C, N57D30B/T0

Our products are designed to be used correctly and with care for the purpose for which they are intended. No liability is accepted by Sonic for incorrect use of any of our products, and Sonic cannot be held responsible for any damage to personnel, property or equipment when using the tools. Incorrect use will also invalidate the warranty.

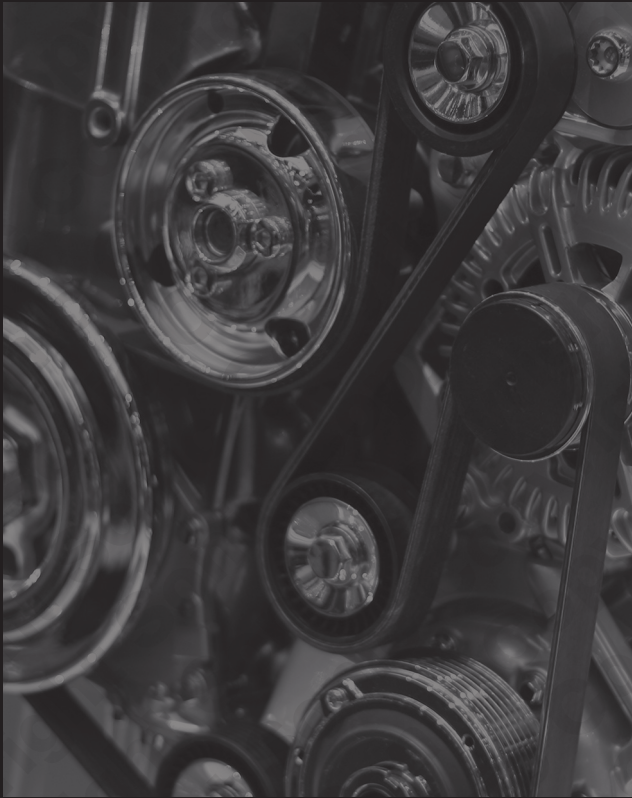
If applicable, the applications database and any instructional information provided has been designed to offer general guidance for a particular tool's use and while all attention is given to the accuracy of the data no project should be attempted without referring first to the manufacturer's technical documentation (workshop or instruction manual) or the use of a recognised authority such as Autodata.

It is our policy to continually improve our products and thus we reserve the right to alter specifications and components without prior notice. It is the responsibility of the user to ensure the suitability of the tools and information prior to their use.



Instructions

Front Pulley Holding Tool
BMW N47/N57 Diesel Engine 1.6/2.0/3.0



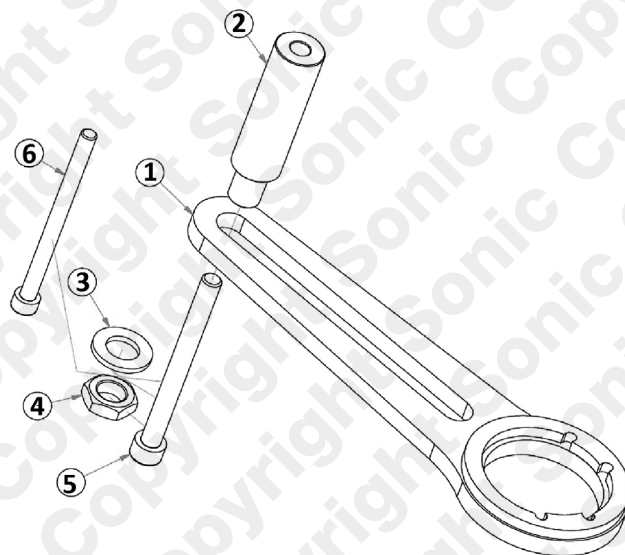
829105 - Front Pulley Holding Tool

Description:

829105 is a special crankshaft pulley holding tool for the N47/N57 BMW diesel engines found across the BMW and Mini ranges. Designed to hold the crankshaft pulley stationary while loosening or tightening the centre bolts of the pulley. Equivalent to OEM 11 7 220

Components

Ref	Comp	OEM	Description
1		11 7 220	Camshaft Setting Plate
2			Threaded Boss
3			Washer
4			Fixing nut
5			M10 Bolt
6			M8 Bolt



Instructions

The following instructions are for guidance only. Please refer to OEM derived data such as the vehicles manufactures own data or Autodata. The use of these engine timing tools is purely down to the user's discretion and Sonic cannot be held responsible for any damage caused what so ever.

