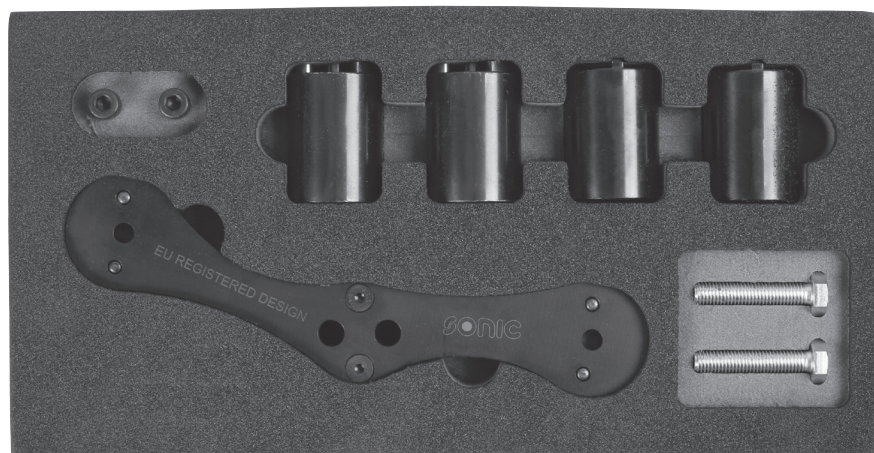


ART NO. 829131



Balance Shaft Alignment Tool Kit

BMW N47 | B47 | B48 Diesel

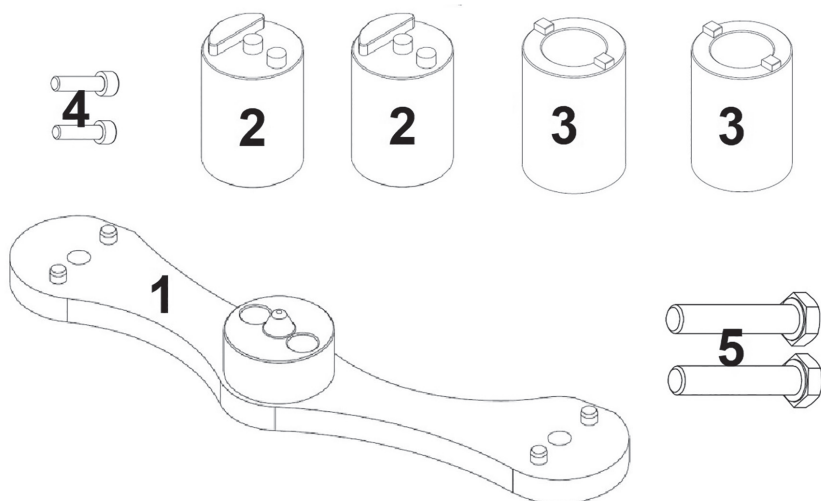


WWW.SONIC-EQUIPMENT.COM

Description

Specifically designed to offer an alignment solution for the BMW 1.6 and 2.0L N47, B47 and B48 diesel engines found across the BMW range from as early as 2008 up to 2016. The set combines the BMW N47 balance shaft locking tool and the B47/B48 locking tools into one simple to use tool. The innovative EU registered design eliminates the requirement for a separate crankshaft alignment tool by combining the functionality of the OEM tools 11 8 790, 11 8 750 and 2 288 054 into one tool with interchangeable balance shaft alignment adaptors. 829131 supersedes Sonic Equipment 829097.

Plan Layout



Ref	Code	OEM	Description
1	4880404		Base Plate Assembly
2	4880405	2 288 054	Alignment Boss N48/B48 x 2
3	4880406	11 8 750	Alignment Boss N47 x 2
4	4880353		Boss Fixing Screws
5	4880346		Fitting Bolts



The following instructions are for guidance only. Please refer to OEM derived data such as the vehicle manufacturers' own data or Autodata.

The use of these engine timing tools is purely down to the user's discretion and Sonic Equipment cannot be held responsible for any damage caused what so ever.

Applications

Make	Model	Year	Type
BMW	1 Series	2007-2016	118d/125d 218d 220d
	2 Series	2014-2016	225d 316d 420d
	3 Series	2007-2016	418d 420d/xDrive
	4 Series	2013-2016	518d sDrive16d sDrive 18d
	5 Series	2007-2016	sDrive20d sDrive25d xDrive 18d
	X1	2009-2016	xDrive 20d xDrive23d xDrive 25d
	X3	2007-2016	116d 120d 123d
	X4	2014-2016	114d 318d 320d
	X5	2013-2016	325d 425d 520d
Mini	Clubman	2015-2016	525d/xDrive
	Mini Hatch	2014-2016	Cooper S/SD/D JCW

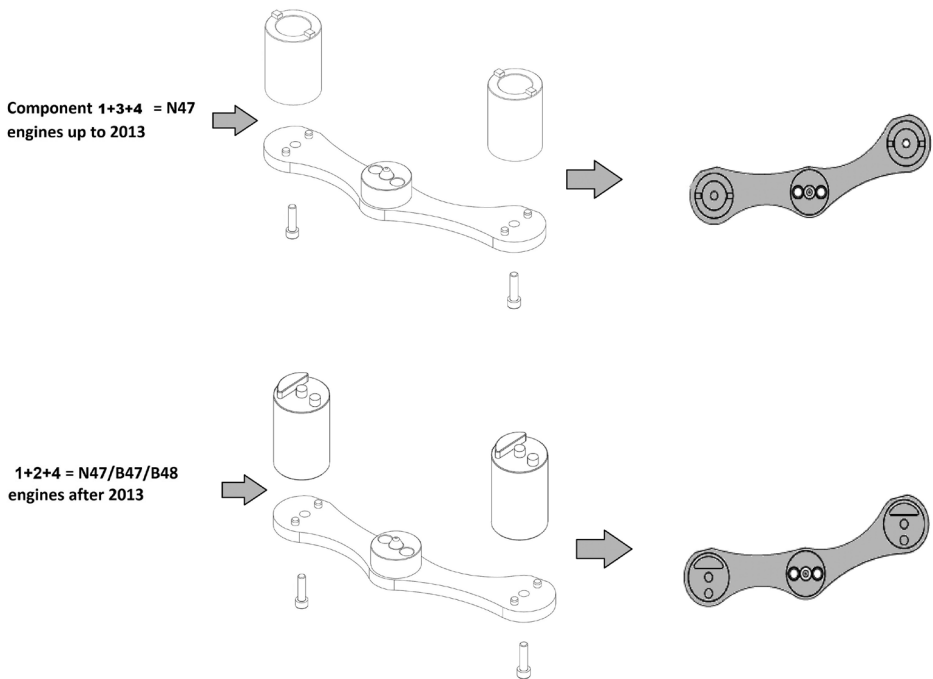
Engine Size	Engine Code
2.0	B47 D20A, B47 C20A, B48 A20B, B47, B47 C20, B48 A20A, N47 D20A/K0, N47 D20A, N47S D20B/D/T0, N47 D16C, N47 D16, N47 D20C/K1, N47 D20C, N47 D20C/U1, N47 D20C/O1, N47 D20D/T1, N47 D20D, N47 D20A/U0, N47T D20K1, N47 D20U0, N47T D20U1, N47T D20O1, N47 D20C/O, N47 D20C/O1, N47 D20O0, N47S D20D/T0, N47 D20A/O0

Instructions

With the engine removed from the vehicle remove:

- Sump
- Oil pump
- Flywheel

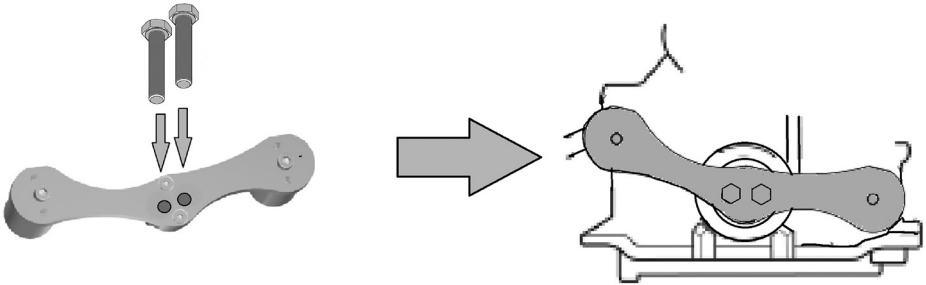
Assemble the tool according to the type of drive used on the end of the balance shafts.
Use the following as a guide:



Instructions

Fitting balance shaft alignment tool:

With the crankshaft set to BDC (bottom dead centre) on No.1 cylinder and the balance shaft weights facing toward the sump fit the balance shaft alignment tool.



Our products are designed to be used correctly and with care for the purpose for which they are intended. No liability is accepted by Sonic Equipment for incorrect use of any of our products, and Sonic Equipment cannot be held responsible for any damage to personnel, property or equipment when using the tools. Incorrect use will also invalidate the warranty.

If applicable, the applications database and any instructional information provided has been designed to offer general guidance for a particular tool's use and while all attention is given to the accuracy of the data no project should be attempted without referring first to the manufacturer's technical documentation (workshop or instruction manual) or the use of a recognised authority such as Autodata.

It is our policy to continually improve our products and thus we reserve the right to alter specifications and components without prior notice. It is the responsibility of the user to ensure the suitability of the tools and information prior to their use.